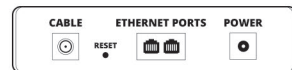


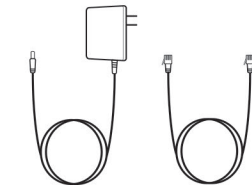
## WHAT'S IN THE BOX

### MODEM PACKAGE CONTENTS

**Note:** The port layout on your modem may be slightly different.



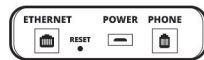
Cable Modem



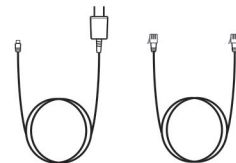
Modem Power Adapter

Ethernet Cable

### DIGITAL HOME PHONE KIT (Bundle customers only)



Analog Telephone Adapter (ATA)



ATA Power Adapter

Ethernet Cable

## HOW TO CONNECT YOUR CABLE MODEM

After a Cable connection has been installed in your home by a technician, follow these instructions to connect your Cable Modem:

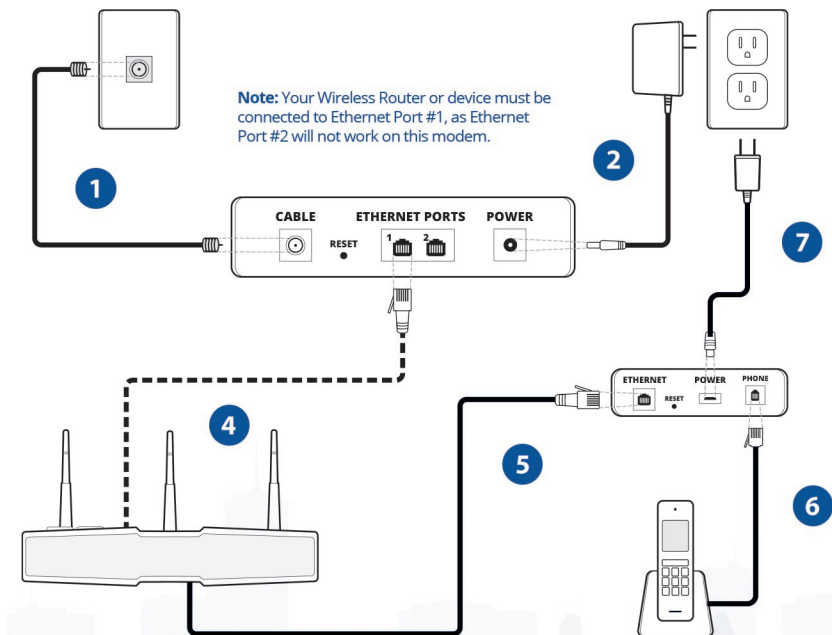
- 1** Connect the **Cable Modem** to the coaxial jack on the wall using the **Coaxial Cable** provided by the install technician.
- 2** Connect the **Cable Modem** to a power outlet using the **Modem Power Adapter** provided. If the device does not power on, look for a power button. Please ensure that you use the correct power adapter.
- 3** Your modem will automatically download the proper configuration files. Please wait a few minutes for this step to complete. When complete, the online light on the modem will turn solid green and stay this way.
- 4** **Please Note: This modem does not have built-in WiFi functionality.** You will need to connect it to a Wireless Router, **OR** connect your modem directly to your device, such as a computer. Please refer to the directions included with your wireless router for information on setting up Wifi.

## BUNDLE CUSTOMERS ONLY

**Only complete the following steps if you have an Internet & Home Phone Bundle.** If you are an Internet-only customer, your setup is complete.

**Please Note:** VOIP 911 service is different than traditional telephone 911 services. Before dialing 911 make sure you know your address/location. 911 service will not be available if there is a power failure or service outage. For more information, please visit [worldline.ca/911](http://worldline.ca/911).

- 5** Connect the **ATA** to a Wireless Router using the **Ethernet Cable** provided.
- 6** Connect the **ATA** to your existing phone using a Phone Cable. **Note:** this is a cable not provided by Worldline.
- 7** Connect the **ATA** to a power outlet using the **ATA Power Adapter** provided. Please ensure that you use the correct power adapter.
- 8** The ATA will automatically download the proper configuration files. Please wait a few minutes for this step to complete. You're all done!



**Note:** Make sure the modem has been connected in the correct order. If you are still having trouble: Unplug the modem and wait 10 seconds. Reconnect the modem again starting at **Step 1**.