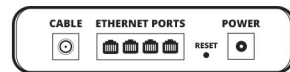


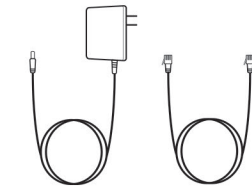
WHAT'S IN THE BOX

MODEM PACKAGE CONTENTS

Note: The port layout on your modem may be slightly different.



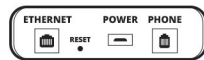
Cable Modem



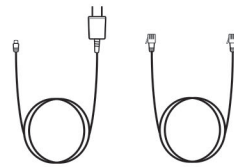
Modem Power Adapter

Ethernet Cable

DIGITAL HOME PHONE KIT (Bundle customers only)



Analog Telephone Adapter (ATA)



ATA Power Adapter

Ethernet Cable

HOW TO CONNECT YOUR CABLE MODEM

After a Cable connection has been installed in your home by a technician, follow these instructions to connect your Cable Modem:

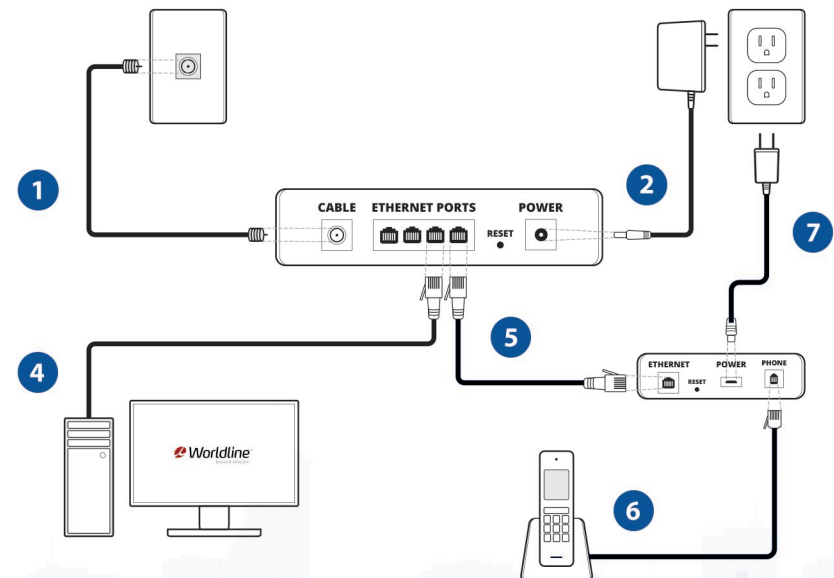
- 1** Connect the **Cable Modem** to the coaxial jack on the wall using the **Coaxial Cable** provided by the install technician.
- 2** Connect the **Cable Modem** to a power outlet using the **Modem Power Adapter** provided. If the device does not power on, look for a power button. Please ensure that you use the correct power adapter.
- 3** Your modem will automatically download the proper configuration files. Please wait a few minutes for this step to complete. When complete, the online light on the modem will turn solid green and stay this way.
- 4** Connect the **Cable Modem** to a computer with an Ethernet port, using the **Ethernet Cable** provided. If your modem has Wi-Fi capabilities, you can connect wirelessly using the login credentials included with your modem. To change the WiFi settings on your modem, please visit worldline.ca/resources for instructions.

BUNDLE CUSTOMERS ONLY

Only complete the following steps if you have an Internet & Home Phone Bundle. If you are an Internet-only customer, your setup is complete.

Please Note: VOIP 911 service is different than traditional telephone 911 services. Before dialing 911 make sure you know your address/location. 911 service will not be available if there is a power failure or service outage. For more information, please visit worldline.ca/911.

- 5** Connect the **ATA** to the Modem using the **Ethernet Cable** provided.
- 6** Connect the **ATA** to your existing phone using a Phone Cable. **Note:** this is a cable not provided by Worldline.
- 7** Connect the **ATA** to a power outlet using the **ATA Power Adapter** provided. Please ensure that you use the correct power adapter.
- 8** The ATA will automatically download the proper configuration files. Please wait a few minutes for this step to complete. You're all done!



Note: Make sure the modem has been connected in the correct order. If you are still having trouble: Unplug the modem and wait 10 seconds. Reconnect the modem again starting at **Step 1**.